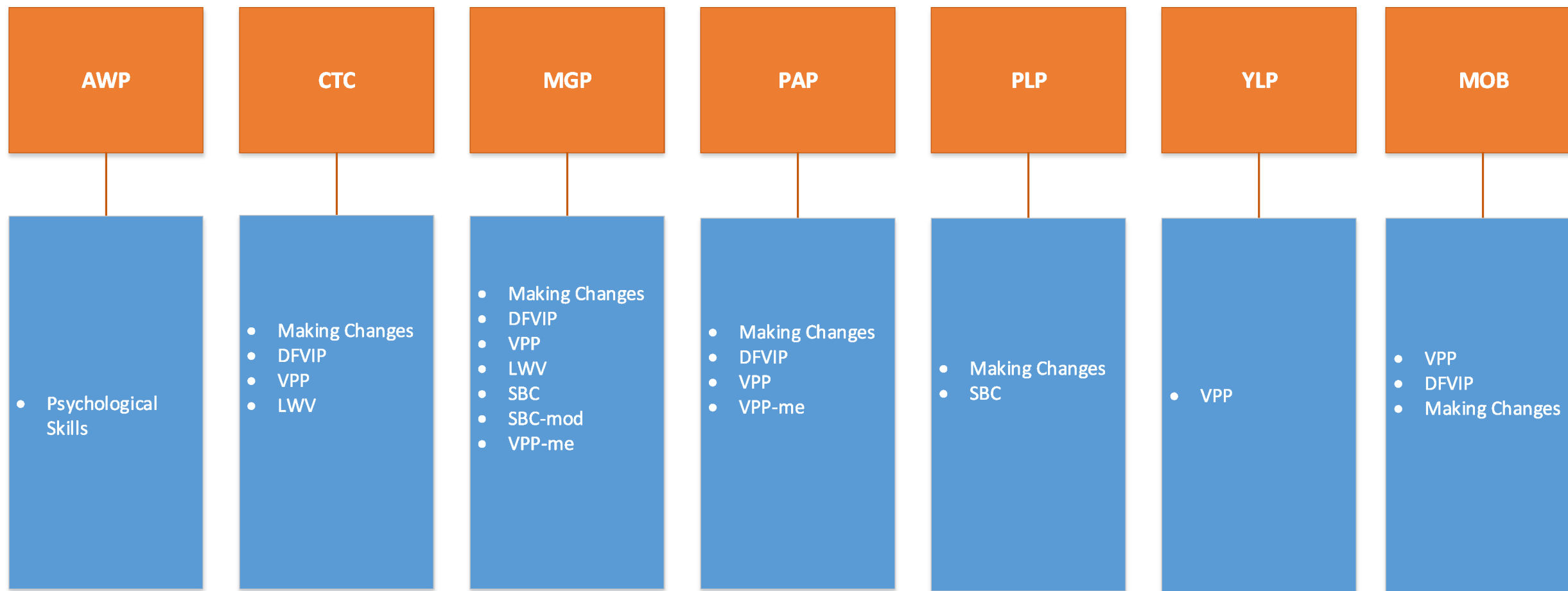


DOCUMENT 1



DFVIP: Domestic & Family Violence Intervention Program  
 VPP: Violence Prevention Program  
 VPP-me: Violence Prevention Program for offenders with low-cognitive functioning  
 VPP-AM: Violence Prevention Program for Aboriginal men  
 LWV: Living Without Violence

SBC: Sexual Behaviour Clinic  
 SBC-mod: Sexual Behaviour Clinic – Moderate Intensity  
 SBC-me: Sexual Behaviour Clinic for offenders with low-cognitive functioning

Programs are scheduled according to need; prisoners assessed as eligible for program involvement by the SMU are referred to the RPB and added to a waitlist. The waitlist is prioritised according to conditional release dates and sentence end dates. Program scheduling also takes into account availability of prison/community group room locations and staff availability. Prisoners may be required to move location in order to participate in a program; prisoner movements are overseen by the SMU and, for relevant prisoners, the Serious Offender Committee.